

How does it work?

Over 100 MD-PhD Programs

44 programs have grant support through NIGMS and are called **Medical Scientist Training Programs (MSTP)**

Most offer incentives (stipend, tuition support)

Integrated MD and PhD training occurs over ~8 year program

A variety of disciplines offer PhD training to MD-PhD students (check for availability at each program!)

- Biomedical Sciences
- Bioengineering
- Chemical & Physical Sciences
- Public Health & Epidemiology
- Social & Behavioral Sciences
- Bioethics



The UNC MD-PhD Mentoring Program

Established and organized by UNC Advocates for MD-PhD Women in Science (AMPWIS)

Advises undergraduates who are considering applying to MD-PhD programs upon graduation in pursuance of a career as a physician scientist.

- Fall & Spring Informational Meetings
- One-on-one mentoring
- Open to *all* undergraduates

Mentors are current MD-PhD Students. A list of available mentors is located on the AMPWIS and UNC MD-PhD Program websites.

<http://uncadvocatesformdphdwomenin-science.web.unc.edu/>

<http://www.med.unc.edu/mdphd>

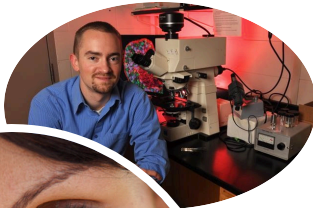
“A *community*, not just a program.”



MD-PhD: Is it right for me?

Brochure adapted from the 2014 Communications Committee of the MD-PhD Section of the Group of Research, Education and Training (GREAT), AAMC

<https://www.aamc.org/mdphd>



Typical MD-PhD Curriculum:

Years 1-2	Years 3-6	Years 7-8
Mostly Medical School	Some Medical School	Mostly Medical School
Some Graduate School	Mostly Graduate School	Some Graduate School

“MD-PhDs are *chimeras*, who blend the discovery of new knowledge with clinical medicine *at the intersection of science and medicine.*”



Many Pathways to Research

- MDs pursue research during Fellowship
- PhDs collaborate to perform translational research
- MD-PhDs conduct mechanism-based research after integrated research/clinical training

What types of students are programs looking for?

- Mature, creative with leadership potential & interpersonal skills
- Significant research experience
- Experience in caring for others
- MCAT score/Academic record (Mean MCAT 34.5, GPA 3.8 for 2013 matriculating students)
- Extracurricular/life experiences
- Recommendation letter from PI

How do you apply?

- AMCAS Application 1 year prior to matriculation (Summer)
- Secondary applications from interested programs (Summer)
- Interviews (Fall-Winter)
- Final decisions (November – March)
- Complete April 30
- Matriculate June – August